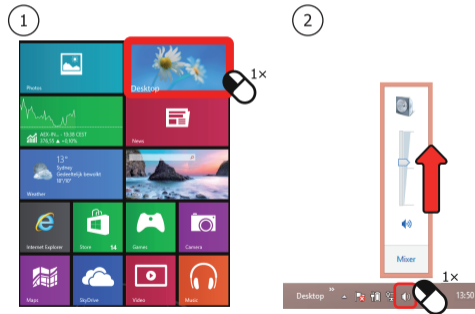
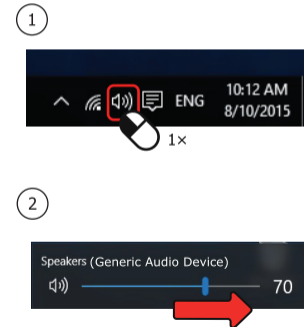


5. Installation - Windows 10/8/7

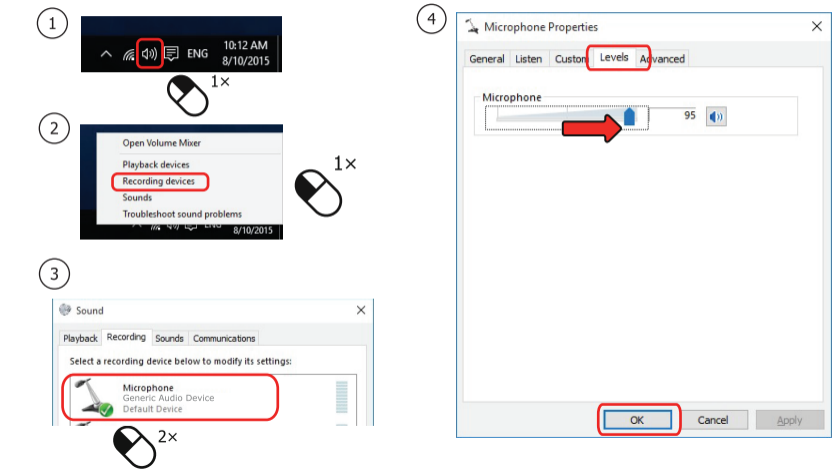
Windows 8



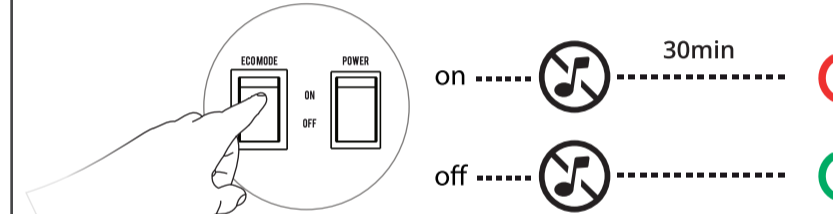
Windows 10/7



6. Installation - Windows 10/8/7



5. ECO Mode



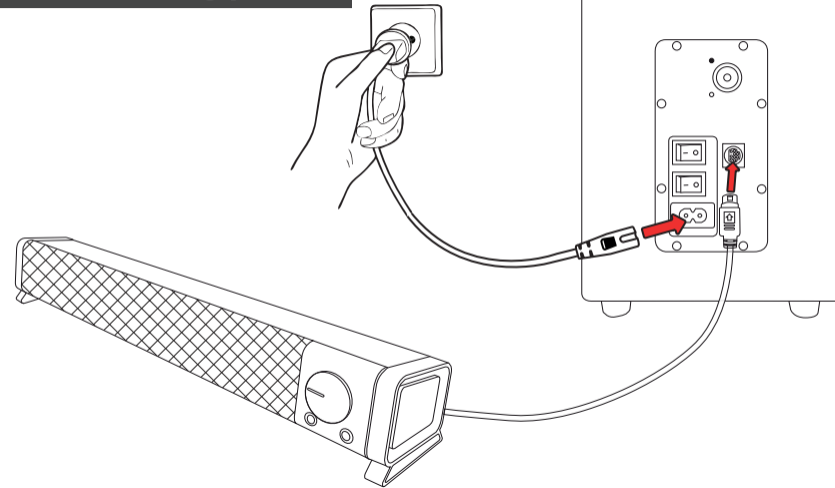
Frequently asked questions www.trust.com/22197/faq

Trust
SOUNDBAR

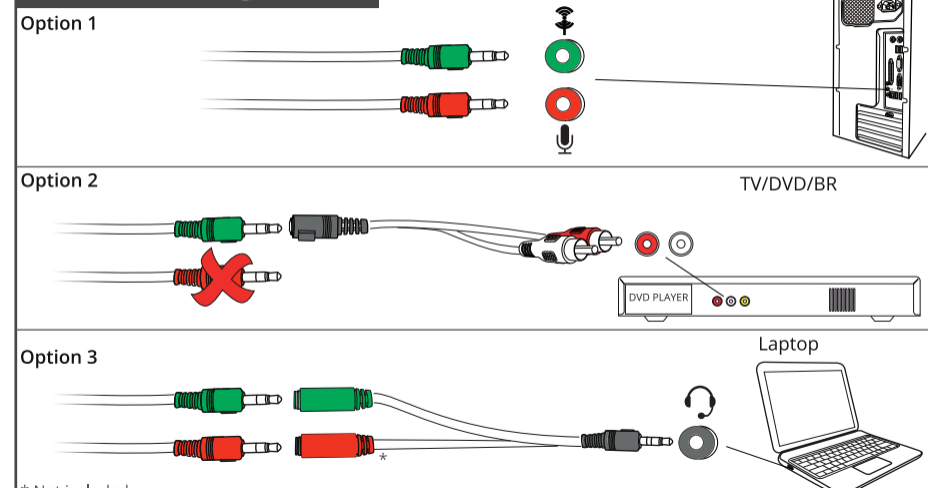
ASTO 2.1

Quick Installation Guide

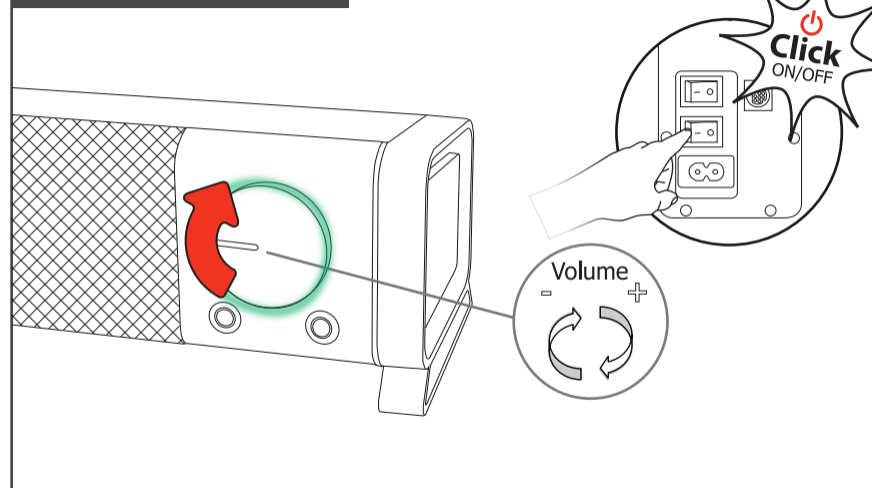
1. Connecting power



2. Connecting audio



3. Volume control



4. Other connections

